

PART OF SECTIONS 19 & 20, T.6N., R.1W., S.L.B. & M.

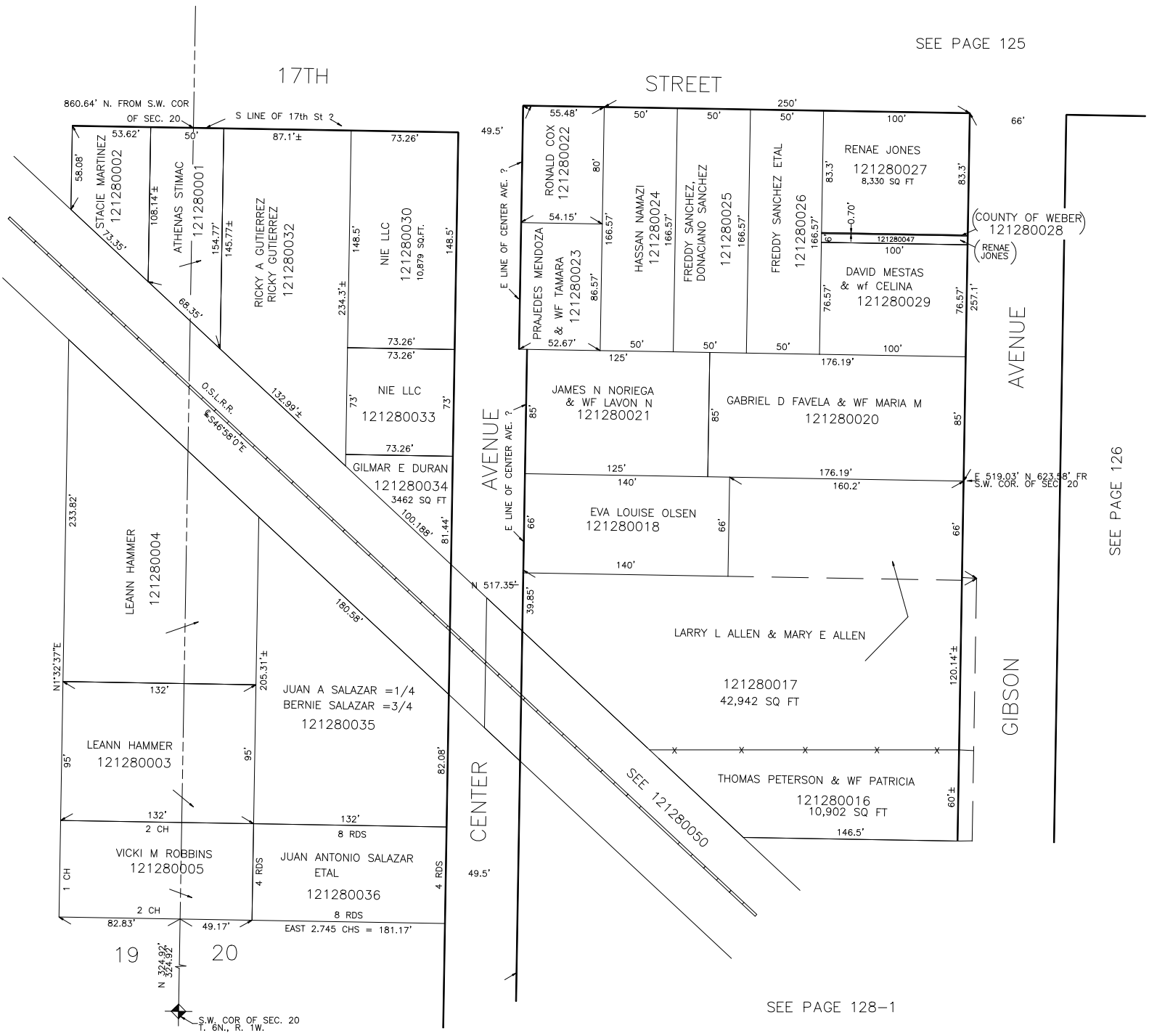
IN OGDEN CITY
SCALE 1" = 50'

TAXING UNIT: 25

SEE PAGE 125

17TH

STREET



COUNTY OF WEBER
121280028
(RENAE JONES)

SEE PAGE 126

SEE PAGE 128-1